

FEBRUARY 2017

Construction update: Flemington Road/ Mount Alexander Road interchange upgrade



We're keen to share with you some information about the significant progress CityLink Tulla Widening crews have made on Flemington Road/Mount Alexander Road interchange upgrades.

After months of intensive works, we have now reached two major construction milestones.

In late February, we'll be opening two new lanes on the Flemington Road exit ramp and a new two-lane bridge connecting Mount Alexander Road to Flemington Road. We'll also be opening a new section of bike path connecting cyclists on Mount Alexander Road to Flemington Road.

Over the coming months, local residents will continue to see changes take shape throughout the area as CityLink Tulla Widening crews work towards completing interchange upgrades by mid-2017.

What to expect - February 2017

Drivers, cyclists and pedestrians can expect changes to traffic conditions by the end of the month. We will be undertaking regular overnight works - including lanes closures - to complete these changes.

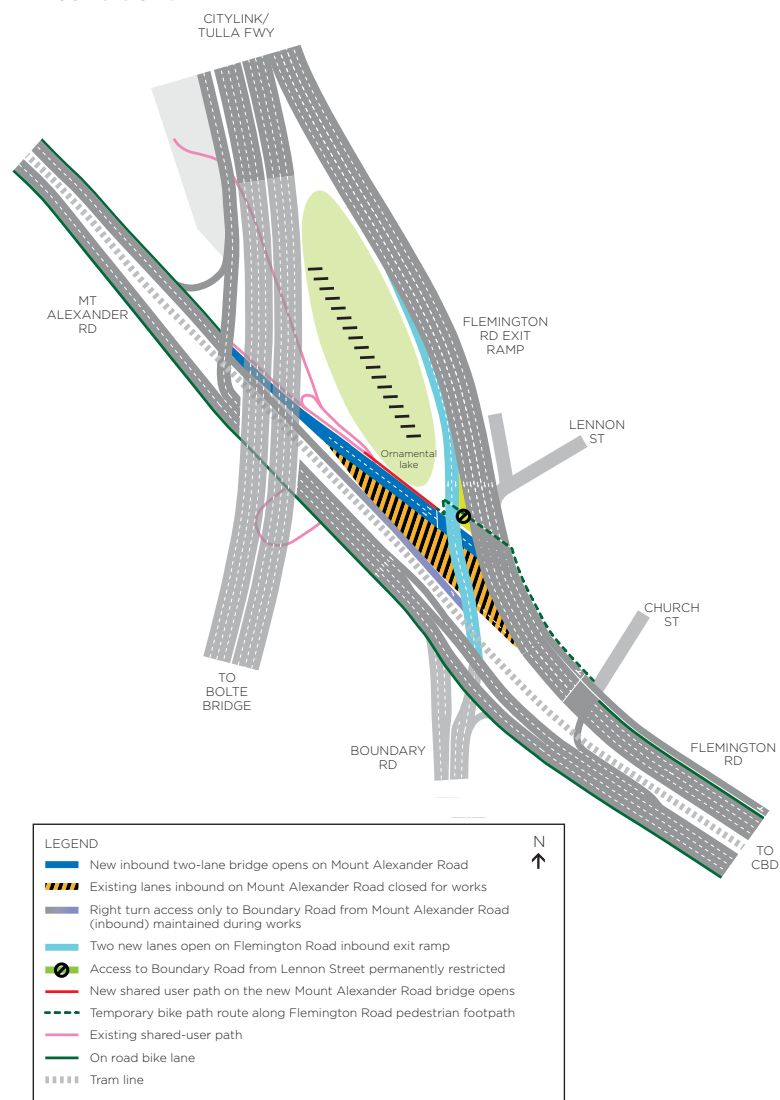
Mount Alexander Road to Flemington Road bridge

- The new Mount Alexander Road two-lane bridge will open to all traffic heading towards Elliot Avenue or the CBD. The two existing lanes will be closed to traffic while works continue in the area. Right turn access only to Boundary Road from Mount Alexander Road (inbound) will be maintained during works.
- The bridge will help ease congestion and improve traffic flow in the area by providing drivers and cyclists dedicated access to Elliot Avenue when the final layout of the interchange is installed later this year.
- A new section of inbound on-road bike path connecting cyclists on Mount Alexander Road to Flemington Road will open. Cyclists will temporarily use a section of footpath between the end of the new Mount Alexander Road bridge and Church Street until other bike path works are finished.
- The new on-road bike path will provide cyclists better access to Elliot Avenue and the CBD, as well as improved connectivity to the Moonee Ponds Creek Trail when it is fully completed later this year.

Flemington Road exit ramp

- Two new lanes on the Flemington Road inbound exit ramp will open, increasing the number of lanes from three to five. The extra lanes will help reduce long queues stretching back onto CityLink during the morning peak. Additionally, concrete barriers have been installed on the ramp to separate the traffic and reduce the dangerous merging and weaving that often causes accidents.
- Drivers will need to choose their lane early, keeping to the left lanes if travelling towards Flemington Road, or the far two right lanes if travelling towards Boundary Road.

- New traffic signals will be in operation to safely control traffic flow from the exit ramp through to the interchange.
- On-road signage will be installed throughout the interchange to help safely guide drivers, cyclists and pedestrians through the changed traffic conditions.

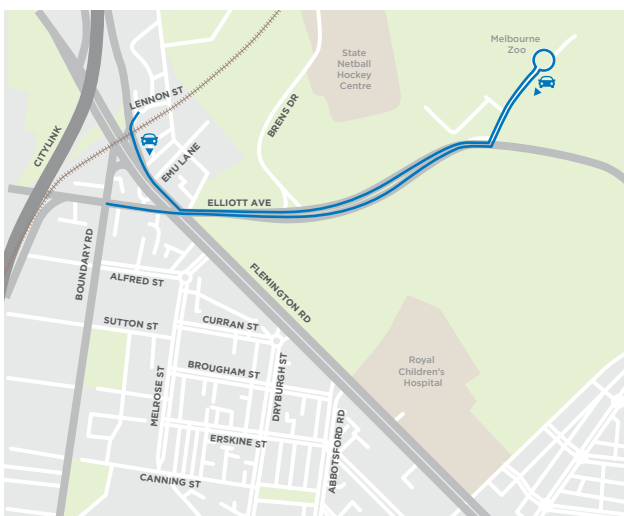


Visit the project website to view a map of the final layout for the interchange

Lennon Street

- Access from Lennon Street to Boundary Road will be removed. This change will improve safety and reduce morning peak congestion on the Flemington Road exit ramp that often occurs as drivers attempt to cross three lanes of freeway exiting traffic in an uncontrolled environment to access Boundary Road.
- Drivers will be able to turn left from Lennon Street onto Flemington Road, however they will need to use alternative routes to access Boundary Road. The alternative routes are shown below. For more information about alternate routes visit www.citylinktullawidening.vic.gov.au
- VicRoads is currently investigating the possibility of providing an alternative access to Boundary Road. VicRoads is working with the relevant stakeholders to develop any potential options and will continue to keep community informed with a further update in the near future. For more information contact citylinktullawidening@roads.vic.gov.au

Alternate routes for accessing Boundary Road



Timeline of works for the Flemington Road/Mount Alexander Road interchange upgrade

2017

Now until 25 February

Overnight works and lane closures at the Flemington Road/Mount Alexander Road interchange

25 February (PM)

New two-lane bridge and shared user path connecting inbound traffic from Mount Alexander Road to Flemington Road opened

Access to Boundary Road from Lennon Street permanently removed to facilitate linemarking works (26 February) on the Flemington Road exit ramp

26 February (AM & PM)

Upgraded traffic signals in operation in the interchange

Various asphaltting works completed in the interchange

Linemarking works on the Flemington Road exit ramp completed

27 February (AM)

Two new lanes on the Flemington Road exit ramp open

April

Upgrades to the two existing inbound Mount Alexander Road lanes completed

Final layout of the Flemington Road/Mount Alexander Road interchange installed

New inbound on-road bike path connecting Mount Alexander Road to Flemington Road completed

We'd like to thank residents for their continued patience during our construction activities. We're looking forward to wrapping up these upgrades along CityLink by mid-2017.

Contact details

For further information
Call 1300 783 947, select 1
Monday to Friday, 9am to 5pm

Email ctwbulletopower@cpbcon.com.au

Visit citylinktullawidening.vic.gov.au

#CTWidening

Please call 131 450 if you require information in another language

